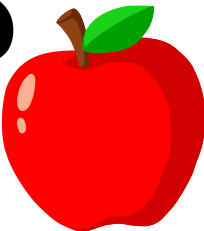


WHERE IS MY **TEACHER?**

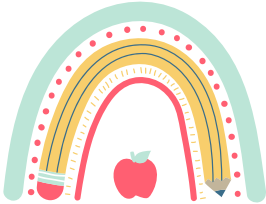


WHERE IS YOUR TEACHER? WHAT IS YOUR TEACHER DOING?

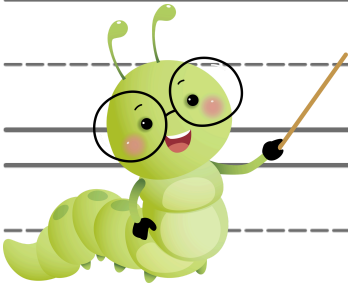
A series of horizontal writing lines for a student to answer the question. Each line set consists of a solid top line, a dashed middle line, and a solid bottom line. There are ten such sets of lines filling the page.

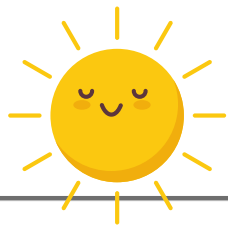
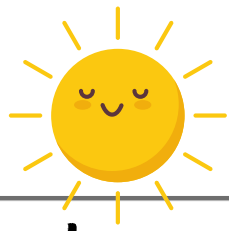
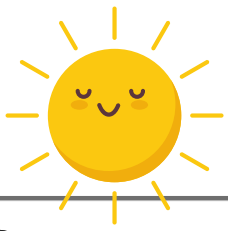


IF I WERE THE TEACHER FOR A DAY...



Handwriting practice area consisting of multiple sets of horizontal lines. Each set includes a solid top line, a dashed middle line, and a solid bottom line, providing a guide for letter height and placement.





Dear Teacher,

Handwriting practice lines consisting of multiple sets of solid top and bottom lines with a dashed midline.

What does your perfect school day look like?



A series of horizontal lines for writing, consisting of solid top and bottom lines with a dashed midline, repeated down the page.