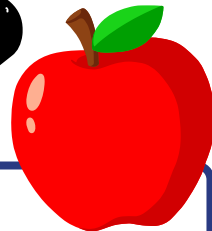
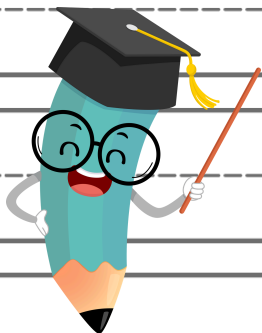
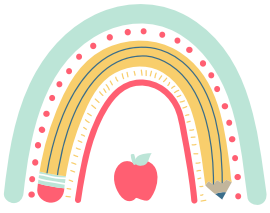


WHERE IS MY **TEACHER?**



WHERE IS YOUR TEACHER? WHAT IS YOUR TEACHER DOING?

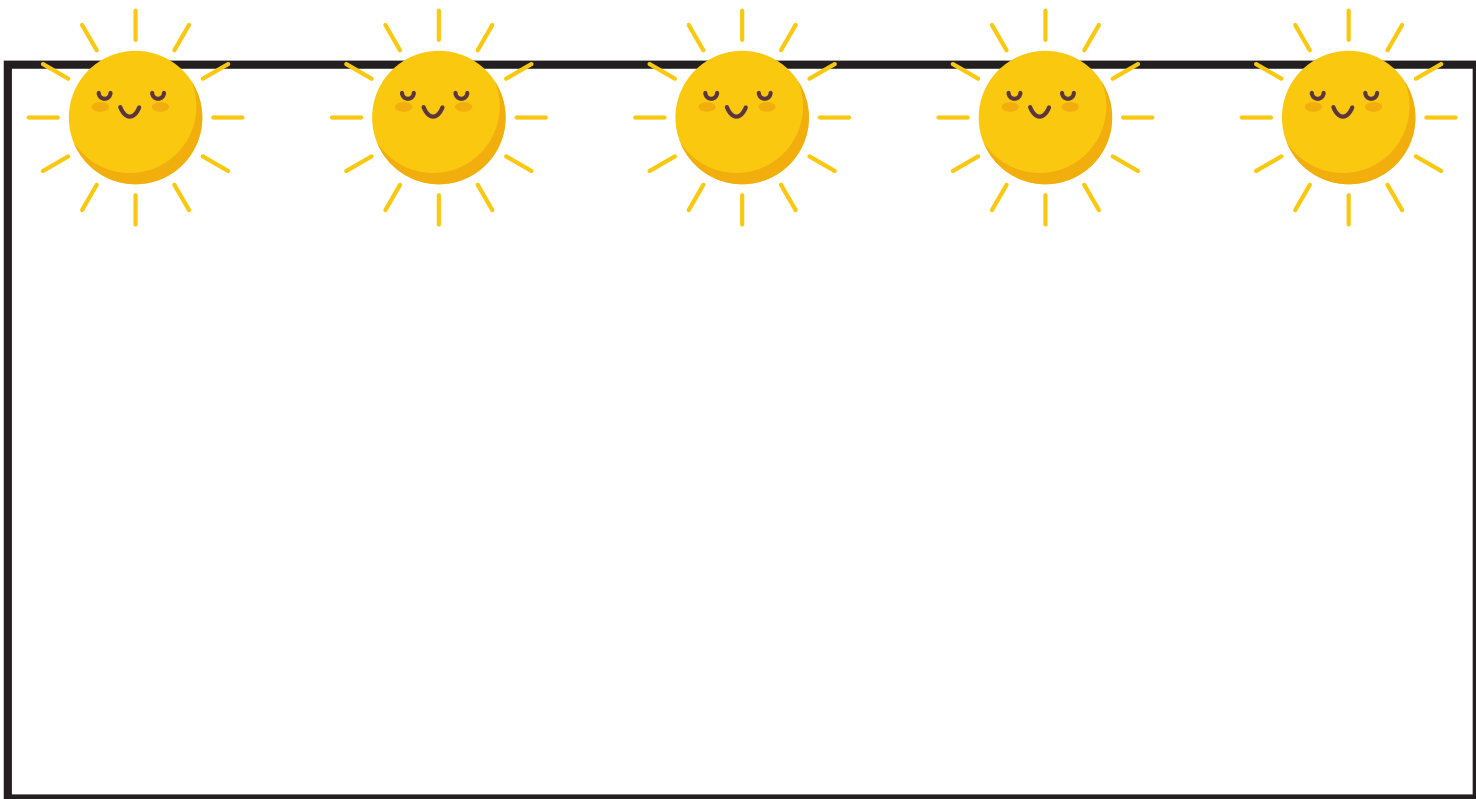




IF I WERE THE TEACHER FOR A DAY...




Handwriting practice lines consisting of solid top and bottom lines with a dashed middle line. There are ten sets of these lines for writing practice.



Dear Teacher,

A series of horizontal lines for writing, consisting of solid top and bottom lines with a dashed midline for each row, providing a guide for letter height and placement.

What does your perfect school day look like?

A black and white icon of a target with an arrow hitting the bullseye, located in the bottom right corner of the slide.This image shows a full page of handwriting practice paper. It features ten identical sets of horizontal guidelines arranged vertically. Each set includes three lines: a solid top line, a dashed middle line, and a solid bottom line, providing a structured space for practicing letter formation and alignment.